

PART OF THE NE.1/4, OF SECTION 23, T.5N., R.1W., S.L.B. & M.
WOODLAND ESTATES SUBDIVISION – UNIT 2 1ST AMENDMENT

IN WEBER COUNTY
SCALE 1" = 40'

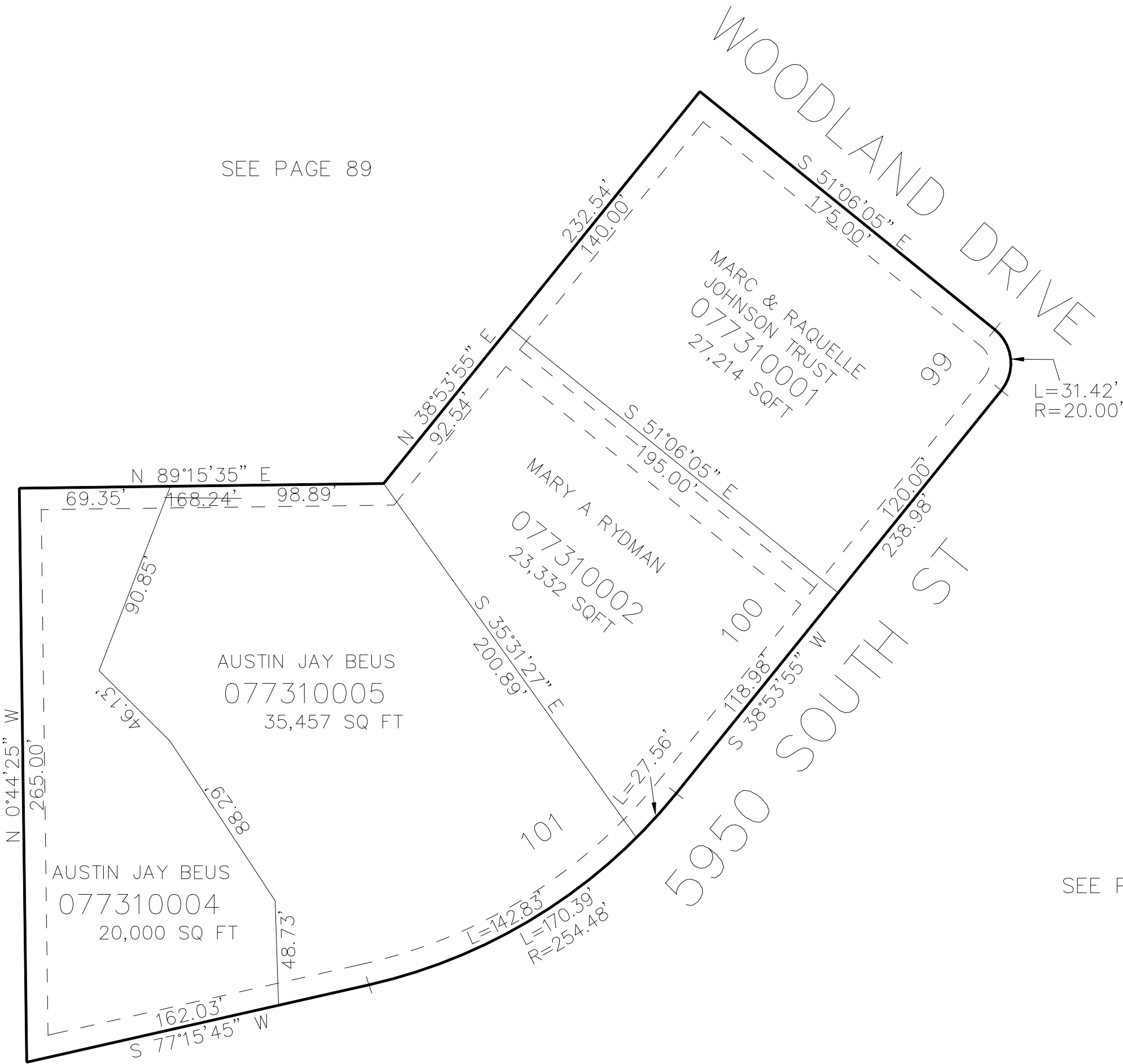
TAXING UNIT: 159

SEE PAGE 89

SEE PAGE 89

SEE PAGE 89

SEE PAGE 89



10' UTILITY & DRAINAGE EASEMENTS EACH
SIDE OF PROPERTY LINES AS INDICATED
BY DASHED LINES EXCEPT AS OTHERWISE
SHOWN.

FOR COMPLETE ENG DATA SEE
ORIGINAL DEDICATION PLAT IN
BOOK 71, PAGE 78 OF RECORDS.